

Installation Instructions:

Ensure within aperture is clean and free of debris, loose cement, and remove all dust from surfaces requiring installation.

Detail A- Linear opening up to 35mm, dry lined walls up to 120 minutes integrity and insulation, concrete blockwork walls up to 240 minutes integrity and insulation.

1. Select correct size polyethylene backer to tightly fit into aperture allowing for movement requirement and cut to required length (e.g. if void is 35mm and movement requirement is +15% (30mm overall) the backer must be 45mm, this allows for 5mm expansion (15% at 35mm) and 5mm additionally to maintain the backer at full extension of seal.
2. Fit polyethylene backer into opening to form recess (as per table below) from front face of wall.
3. Fill recess until flush with wall and trowl smooth
4. Repeat to the opposite side of the wall.

Table 1:

Void Size	FS702 Intumastic / FS703 Silicone Depth
35mm	25mm
25mm	25mm
10mm to 25mm	1 to 1 ratio
Up to 10mm	10mm

Note: where wall is solid concrete blockwork wall detail is only required to one side or centrally.

Detail B- Linear opening up to 120 minutes insulation & integrity

1. Cut 50mm 64kg/m3 rock minearl fibre to tightly fit into the aperture allowing for movement requirement. E.g. if void is 100mm and movement requirement is +15% (30mm overall) the backer must be cut at 120mm, this allows for 15mm expansion (15% at 100mm) and 5mm additionally to maintain the backer at full extension of seal.
2. Fit 64kg/m3 rock mineral fibre into opening to form 3mm recess from front face of wall.
3. Fill recess until flush with wall and trowel smooth
4. Repeat to the opposite side of the wall

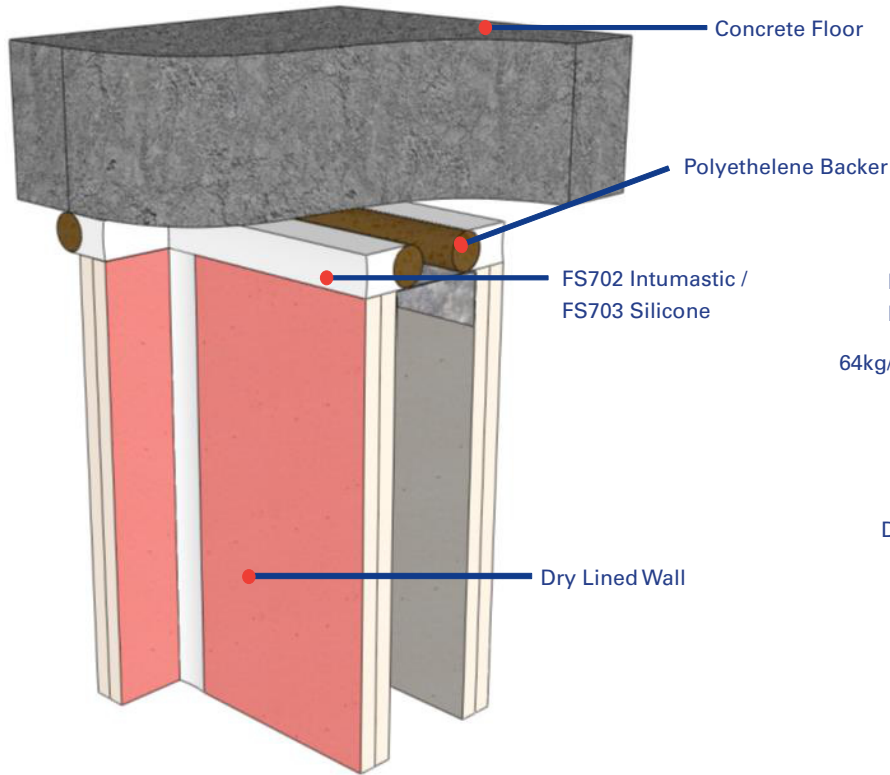
Note: where wall is solid concrete blockwork wall detail is only required to one side of centrally rock mineral fibre must be a minimum of 100mm thickness & FS702 Intumastic must be applied to both sides.

Detail C- Linear opening up to 200mm up to 120minutes insulation & integrity

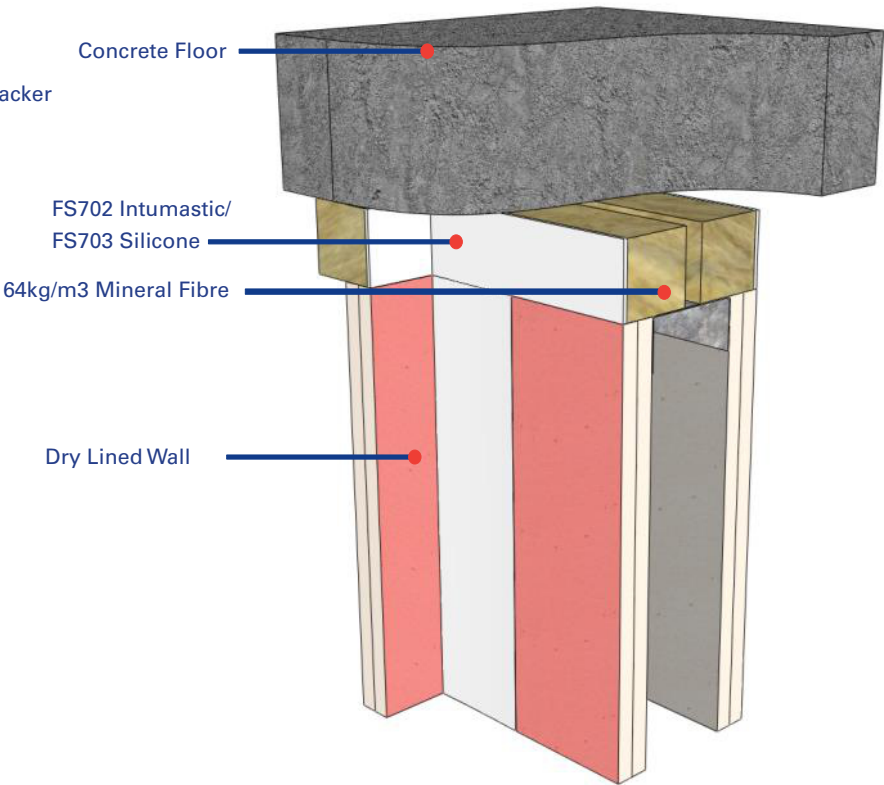
1. Cut 100mm 64kg/m3 rock mineral fibre to tightly fit into aperture allowing for movement requirement. Note 1 within detail A and B above applies.
2. Fit 64kg/m3 rock mineral fibre into opening to form 3mm recess from top face of floor.
3. Fill recess until flush with floor and trowel smooth.

Mastic Seal	FS702 Intumastic / FS703 Silicone Linear M Per 310ml tube
3mm x 50mm	2.07
10mm x 10mm	3.10
12mm x 25mm	1.03
25mm x 25mm	0.50

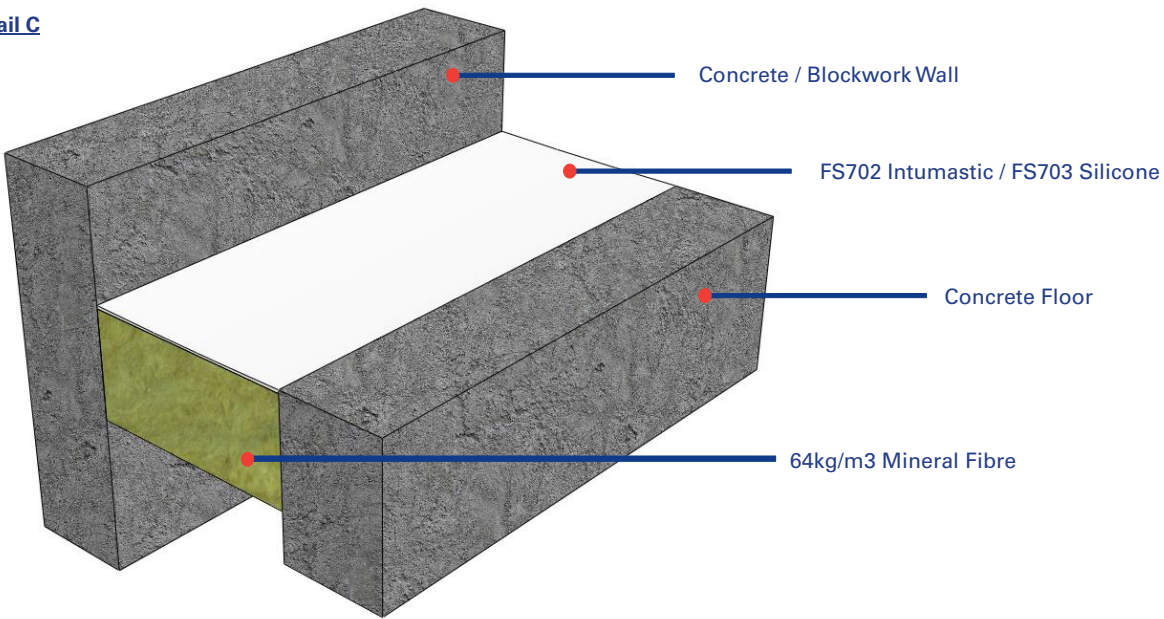
Detail A



Detail B



Detail C



Test Information:

Test: BSEN 1366 / BS476

Products:

FS702 Intumastic and FS703 Silicone

Scenario:

Linear seals to construction interfaces

Penetrations:

N/A

Void Size:

Detail A: Up to 35mm

Detail B: Up to 200mm

Detail C: Up to 200mm

Fire Resistance:

Tested up to 240 minutes

Movement:

FS702 Intumastic: Up to  $\pm 15\%$  (Detail A)

FS703 Silicone : Up to  $\pm 25\%$  (Detail A)

FS702 Intumastic / FS703 Silicone up to  $\pm 15\%$  for soft-joint seals (Details B+C)

Acoustic:

Up to 35mm reinstat wall 35 to 200mm up to 55dB

Nullifire details will only perform to the substrates performance capabilities. This applies to fire and acoustic. Details may be applied to certain penetration seals, please see drawing sheet number TBC.

It is the responsibility of the purchaser to ensure suitability. If in doubt, please call a member of technical.

Drawing Title:

Linear seal to various wall and floor constructions.

Drawing Reference No:

PS-006  
A3